

PERIMETER

SURVEYING & MAPPING
Certificate of Authorization No. LB7264
Prepared by Jeff S. Hodapp, P.S.M.
947 Clint Moore Road
Boca Raton, Florida 33487
Tel: (561) 241-9988
Fax: (561) 241-5182

PARK CENTRAL AT CYPRESS KEY

A PORTION OF SECTION 34, TOWNSHIP 43 SOUTH, RANGE 41 EAST,
VILLAGE OF ROYAL PALM BEACH, PALM BEACH COUNTY, FLORIDA

FEBRUARY, 2015

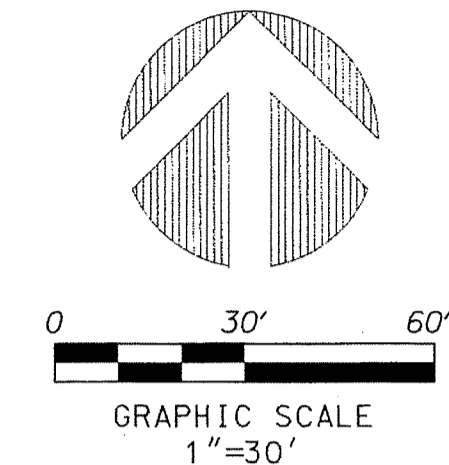
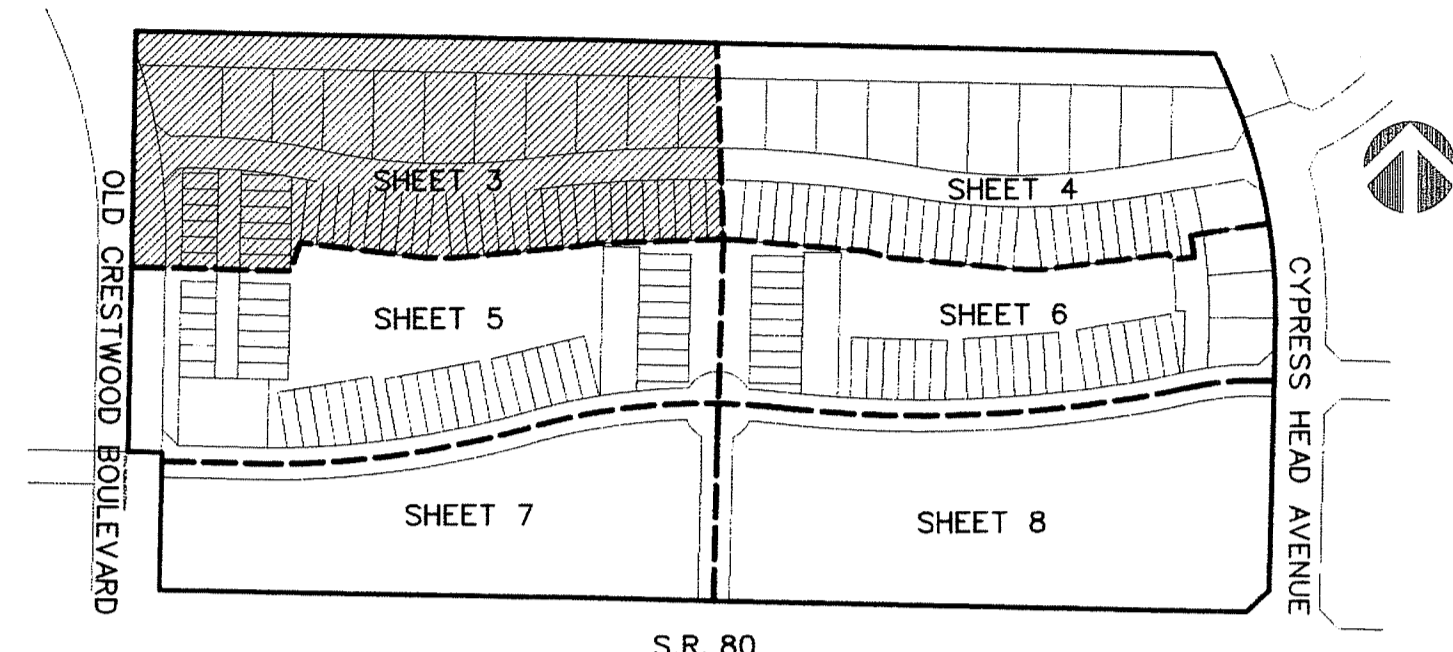
199

SHEET 3 OF 8

LEGEND:

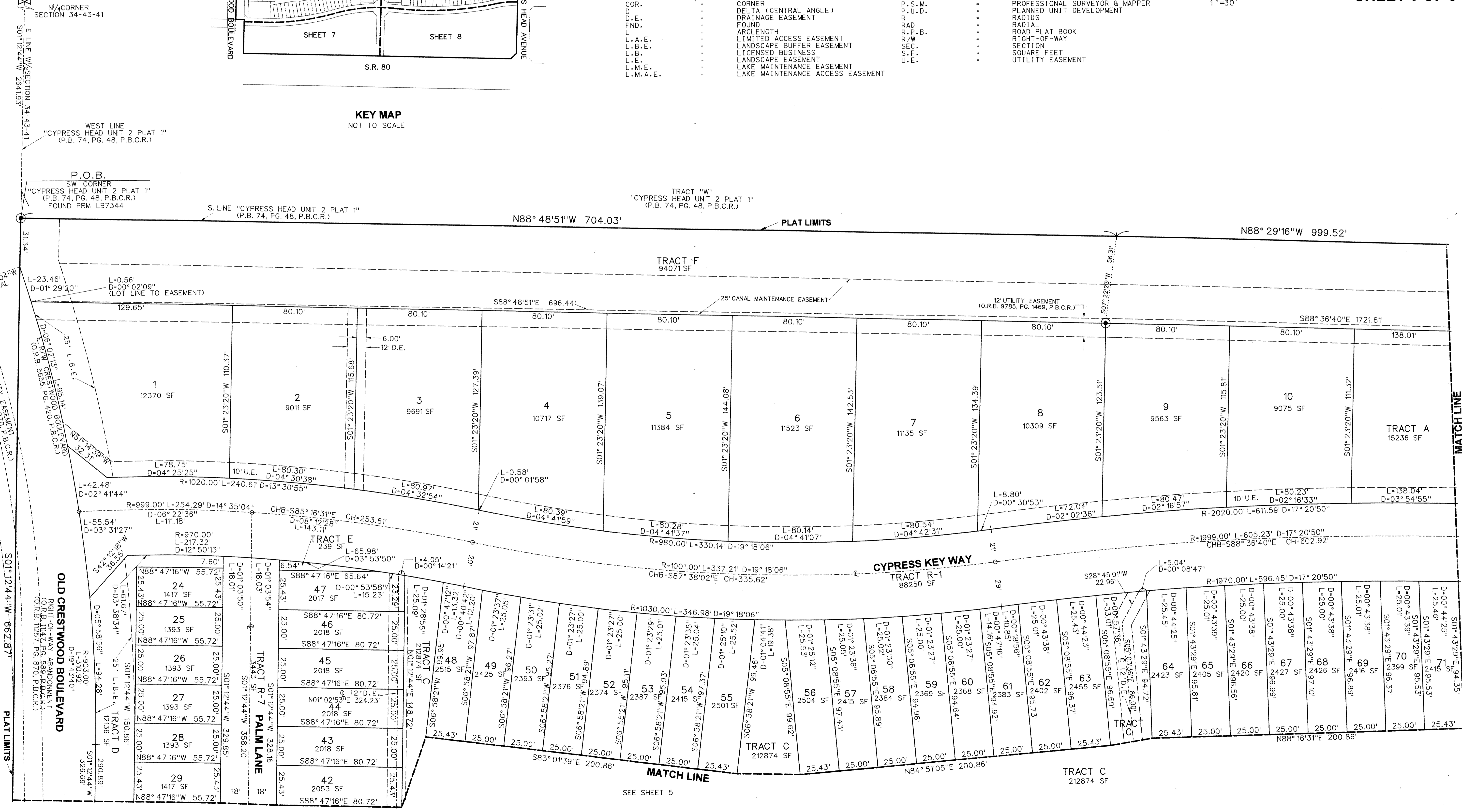
- SET P.R.M. (UNLESS OTHERWISE NOTED)-4" X4" CONC. MON. WITH ALUMINUM DISK STAMPED P.R.M. #LB7264
- PERMANENT CONTROL POINT
- ⊙ CENTERLINE
- ALUM. ALUMINUM
- CH. CHORD
- CHB. CHORD BEARING
- CONC. CONCRETE
- COR. CORNER
- Δ DELTA (CENTRAL ANGLE)
- D.E. DRAINAGE EASEMENT
- FND. FOUND
- L. ARCLength
- L.A.E. LIMITED ACCESS EASEMENT
- L.B.E. LANDSCAPE BUFFER EASEMENT
- L.B. LICENSED BUSINESS
- L.E. LANDSCAPE EASEMENT
- L.M.E. LAKE MAINTENANCE EASEMENT
- L.M.A.E. LAKE MAINTENANCE ACCESS EASEMENT
- L.S. LICENSED SURVEYOR
- L.S.E. LIFT STATION EASEMENT
- L.W.D.D. LAKE WORTH DRAINAGE DISTRICT
- MON. MONUMENT
- O.R.B. OFFICIAL RECORDS BOOK
- N.R. NON-RADIAL
- P.B. PLAT BOOK
- P.B.C. PALM BEACH COUNTY
- P.B.C.R. PALM BEACH COUNTY RECORDS
- P.C. PAGE
- P.C.P. PERMANENT CONTROL POINT
- P.O.B. POINT OF BEGINNING
- P.O.C. POINT OF COMMENCEMENT
- P.R.M. PERMANENT REFERENCE MONUMENT
- P.S.M. PROFESSIONAL SURVEYOR & MAPPER
- P.U.D. PLANNED UNIT DEVELOPMENT
- R. RADIUS
- RAD. RADIAL
- R.P.B. ROAD PLAT BOOK
- R/W. RIGHT-OF-WAY
- SEC. SECTION
- S.F. SQUARE FEET
- U.E. UTILITY EASEMENT

ABBREVIATIONS:



KEY MAP

NOT TO SCALE



N¼ CORNER SECTION 34-43-41
E LINE W/SECTION 34-43-41
S01°12'44"W 2641.93'

WEST LINE "CYPRESS HEAD UNIT 2 PLAT 1"
(P.B. 74, PG. 48, P.B.C.R.)

P.O.B. SW CORNER "CYPRESS HEAD UNIT 2 PLAT 1"
(P.B. 74, PG. 48, P.B.C.R.)
FOUND PRM LB7344

S. LINE "CYPRESS HEAD UNIT 2 PLAT 1"
(P.B. 74, PG. 48, P.B.C.R.)

P.O.B. SW CORNER "CYPRESS HEAD UNIT 2 PLAT 1"
(P.B. 74, PG. 48, P.B.C.R.)
FOUND PRM LB7344

TRACT "W"
"CYPRESS HEAD UNIT 2 PLAT 1"
(P.B. 74, PG. 48, P.B.C.R.)

N88° 48'51"W 704.03'

PLAT LIMITS

N88° 29'16"W 999.52'

TRACT F
94071 SF

CYPRESS KEY WAY

TRACT R-1
88250 SF

OLD CRESTWOOD BOULEVARD

RIGHT-OF-WAY ABANDONMENT
(O.R.B. 1142, PG. 589, P.B.C.R.)
(O.R.B. 1127, PG. 870, P.B.C.R.)

PLAT LIMITS

MATCH LINE
SEE SHEET 5

TRACT C
212874 SF